

UTILITY MERCHANDISER INSTALLATION & OPERATIONS MANUAL

04UM-NRG
05UM-NRG
06UM-NRG

Clearv[®]yant[™]
LED SYSTEM₃

Table of Contents

Operating Data & Case Dimensions	2-7	Airflow, Defrost & Temperature	15
General Information	8	Lighting and Power Supplies	16-17
Installation & Trim Out	9-11	Fans & Case Cleaning	18
Connections & Piping	12-13	Appendix	19
Pre-Power Checklist.....	14		

*To ensure proper functionality and optimum performance, it is **STRONGLY** recommended that Hillphoenix display cases be installed/serviced by qualified technicians who have experience working with commercial refrigerated display merchandisers and storage cabinets. For a list of Hillphoenix-authorized installation/service contractors, please visit our Web site at www.hillphoenix.com.*



P088130A
V1.02
07/27/16

V1.00 (09/12)

- new manual

V1.01 (01/14)

- Added glycol information to Important Notices section.
- Moved operating data and case dimensions information from Appendix and incorporated into the main body of the handbook.

V1.02 (07/16)

- Added Clearvoyant 3 Logo to cover

PRECAUTIONARY NOTICES

At Hillphoenix®, the safety of our customers and employees—as well as the ongoing performance of our products—are top priorities. To that end, we designate important information in all Hillphoenix installation and operations handbooks with an accompanying alert symbol. All of these notices are meant to provide information about potential dangers to personal health and safety—as well as risks of case damage—if the instructions are not carefully followed.



ATTENTION!

Indicates important information that is critical to proper case performance.



CAUTION!

Indicates the potential threat of injury if all instructions are not followed carefully.



DANGER!

Indicates an immediate threat of serious injury or death if all instructions are not followed carefully.

SERVICE NOTICE

To ensure optimum case performance, we strongly recommend that Hillphoenix display cases be installed and serviced by qualified technicians who have experience working with commercial refrigerated display merchandisers and storage cabinets. For a list of Hillphoenix-authorized installation and service contractors, please visit our Web site: www.hillphoenix.com

LIABILITY NOTICE

For Cases with Shelf Lighting Systems

Hillphoenix shelf lighting systems—as well as display cases with shelf lighting systems—are NOT designed to withstand direct or indirect exposure to water or other liquids. The use of a misting system or water hose on a display case with a shelf lighting system, resulting in the direct or indirect exposure of the lighting system to water, can lead to a number of serious issues (including, without limitation, electrical failures, fire, electric shock, and mold) in turn resulting in personal injury, death, sickness, and/or serious property damage (including, without limitation, to the display itself, to the location where the display is situated [e.g., store] and to any surrounding property).

DO NOT use misting systems, water hoses or other devices that spray liquids in Hillphoenix display cases with lighted shelves. If a misting system or water hose is installed

or used on a display case with a shelf lighting system, then Hillphoenix shall not be subject to any obligations or liabilities (whether arising out of breach of contract, warranty, tort [including negligence], strict liability or other theories of law) directly or indirectly resulting from, arising out of or related to such installation or use, including, without limitation, any personal injury, death or property damage resulting from an electrical failure, fire, electric shock, or mold.

P079211M, REVO

R-744 (CO₂) NOTICE

For Systems Utilizing R-744 (CO₂) Refrigerant

For refrigeration units that utilize R-744 (CO₂), pressure relief and pressure-regulating relief valves may need to be installed based on the system capacity. The valves need to be located such that no stop valve is positioned between the relief valves and the parts or section of the system being protected.

When de-energizing refrigeration units containing R-744 (CO₂), venting of the R-744 (CO₂) refrigerant may occur through the pressure regulating relief valves. These valves are located on the refrigeration system and not on the case model. If venting does occur, the valve must not be defeated, capped, or altered by any means.

GLYCOL NOTICE

For Systems Utilizing Glycol Refrigerant

Use of glycol as a secondary refrigerant must be carried out in accordance with the procedures set forth in the Hillphoenix Second Nature Medium Temperature Secondary Refrigeration Installation Manual, available for download here: <http://goo.gl/JIWd77>

Additionally, Hillphoenix uses and recommends Dow glycol-based coolants, which contain specially formulated industrial inhibitors that help to prevent corrosion in our display cases. Over time, the effectiveness of these inhibitors deteriorates, increasing the chance for corrosion. We recommend testing of glycol solutions annually through the Dow lab. The service is free for systems containing over 250 gallons of glycol coolants, while the cost is approximately \$100 for smaller systems. For more information, see Dow's DOWFROST and DOWFROST HD Guide here: <http://goo.gl/v6i1iQ>



CAUTION!

Under no circumstance should any component be replaced or added without consulting Hillphoenix Field Service Engineering. Utilizing improper components may result in serious injury to persons or damage to the refrigeration system.

O4UM-NRG

Electrical Data

Case Length	Fans Per Case	High Efficiency Fans	
		120 Volts	
		Amps	Watts
4'	1	0.20	14
6'	2	0.40	28
8'	2	0.40	28
12'	3	0.60	42

Lighting Data

Case Length	Lights Per Row	Light Length	Clearvoyant LED Lighting (Per Light Row)			
			Standard Power (Cornice or Shelf)		High Power (Cornice)	
			120 Volts		120 Volts	
			Amps	Watts	Amps	Watts
4'	1	4'	0.10	11.9	0.18	21.5
6'	2	3'	0.14	16.6	0.25	29.8
8'	2	4'	0.20	23.8	0.36	43.0
12'	3	4'	0.30	35.7	0.54	64.5

Guidelines & Control Settings

Model	Front Sill Height	²BTUH/ft		Superheat Set Point @ Bulb (°F)	Evaporator³ (°F)	Discharge⁴ Air (°F)	Discharge Air⁵ Velocity (FPM)
		Conventional	Parallel				
Dairy / Deli / Produce	All	1063	930	6 - 8	28	31	180
Meat	Ext.¹	1051	920	6 - 8	26	30	180

Defrost Controls

Defrosts Per Day	Electric Defrost		Timed-Off Defrost		Hot Gas Defrost	
	Fail-Safe (min)	Termination Temp (°F)	Fail-Safe (min)	Termination Temp (°F)	Fail-Safe (min)	Termination Temp (°F)
6	---⁶	---	30	42	---	---

1 For meat application: extended front sills are required for maintaining proper case temperature levels (5" baseframe = 24" or higher; 11" baseframe = 30" or higher)

2 BTUH/ft notes:

- Listed BTUH/ft indicate unlighted shelves. For LED lighting, add 36 BTUH per 4' lighted shelf and 27 BTUH per 3' lighted shelf to determine Total Lighting BTUH Load, then divide the Total Lighting BTUH Load by the length of the case. For T8 lighted shelves and 3rd row lighting, add 92 BTUH per 4' lighted shelf and 69 BTUH per 3' lighted shelf to determine Total Lighting BTUH Load, then divide the Total Lighting BTUH Load by the length of the case.
- Add 132 BTUH/ft when aftermarket merchandising accessories are utilized to determine the total BTUH load.

3 Listed evaporator temperature indicates unlighted shelves. For lighted shelves and/or aftermarket merchandising accessories, reduce the listed evaporator temperature by 2°F.

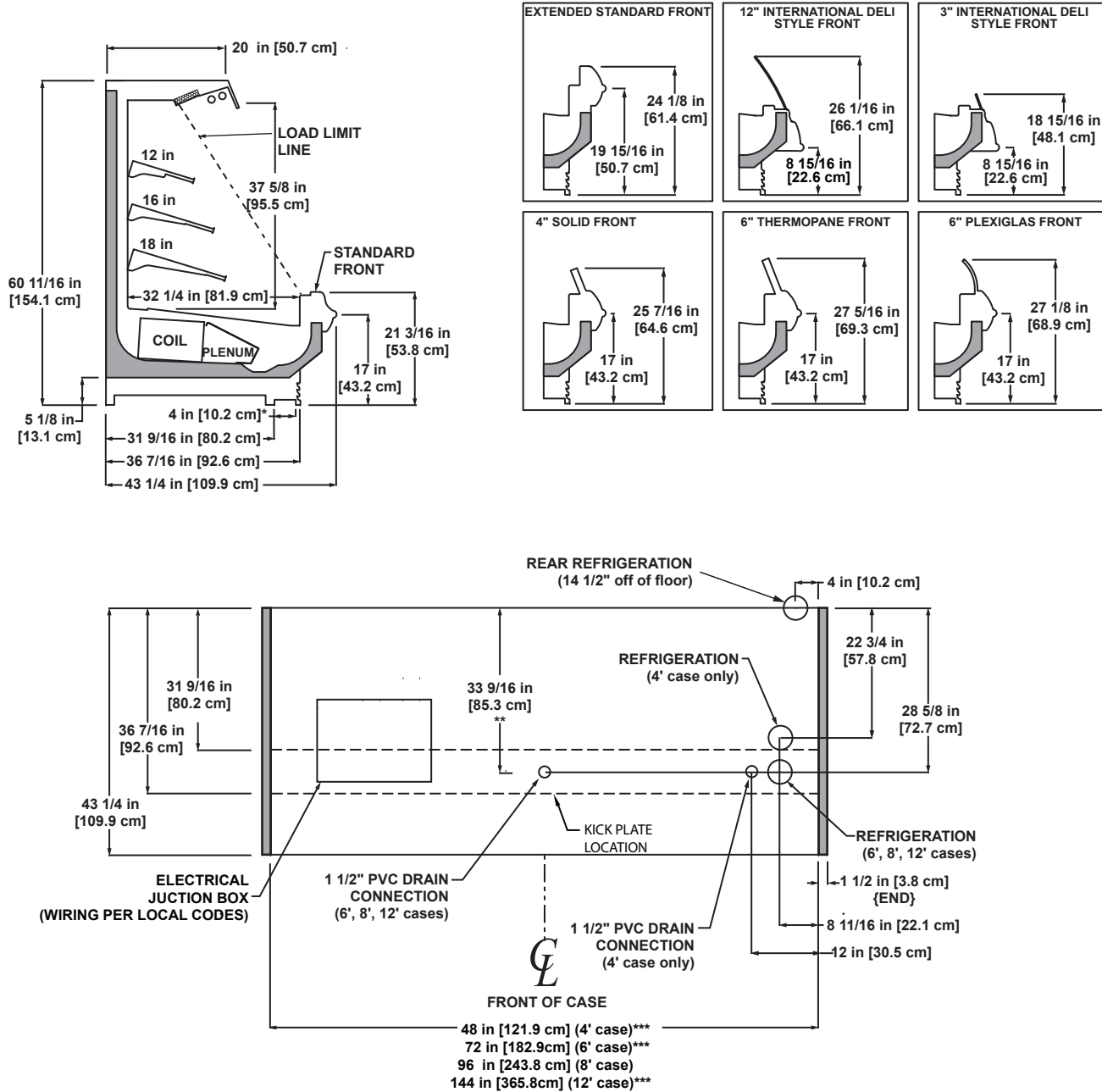
4 Conventional Discharge Air Control – Recommended Settings: Cut-In Temp = Discharge Air + 2°F; Cut-Out Temp = Discharge Air - 2°F

5 Average discharge air velocity at peak of defrost.

6 NOTE: " - - " indicates that feature is not an option on this case model.

5" BASEFRAME

(Baseframe heights vary per customer specification.)



NOTES:

- * : STUB-UP AREA
- ** : RECOMMENDED STUB-UP CENTERLINE FOR ELECTRICAL AND HUB DRAINS
- *** : AVAILABLE UPON REQUEST
- FRONT AND REAR SILL HEIGHTS VARY WITH BASEFRAME HEIGHT
- ENDS ADD APPROXIMATELY 1 INCH TO CASE HEIGHT
- A 2" MINIMUM AIR GAP IS REQUIRED BETWEEN THE REAR OF THE CASE AND A WALL
- AVAILABLE SHELF SIZES: 10", 12", 14", 16" & 18"
- PRODUCT ON TOP SHELF SHOULD BE 3" BELOW DISCHARGE
- RECOMMENDED SHELF CONFIGURATION IN ROWS: 1-12", 1-16" & 1-18"
- DASHED LINES SIGNIFY AREA INSIDE BASE RAIL BEHIND KICK-PLATE

O5UM-NRG

Electrical Data

Case Length	Fans Per Case	High Efficiency Fans	
		120 Volts	
		Amps	Watts
4'	1	0.20	14
6'	2	0.40	28
8'	2	0.40	28
12'	3	0.60	42

Lighting Data

Case Length	Lights Per Row	Light Length	Clearvoyant LED Lighting (Per Light Row)			
			Standard Power (Cornice or Shelf)		High Power (Cornice)	
			120 Volts		120 Volts	
			Amps	Watts	Amps	Watts
4'	1	4'	0.10	11.9	0.18	21.5
6'	2	3'	0.14	16.6	0.25	29.8
8'	2	4'	0.20	23.8	0.36	43.0
12'	3	4'	0.30	35.7	0.54	64.5

Guidelines & Control Settings

Model	Front Sill Height	² BTUH/ft		Superheat Set Point @ Bulb (°F)	Evaporator ³ (°F)	Discharge Air ⁴ (°F)	Discharge Air ⁵ Velocity (FPM)
		Conventional	Parallel				
Dairy / Deli / Produce	All	1143	1000	6 - 8	28	31	180
Meat	Ext. ¹	1133	992	6 - 8	26	30	180

Defrost Controls

Defrosts Per Day	Electric Defrost		Timed-Off Defrost		Hot Gas Defrost	
	Fail-Safe (min)	Termination Temp (°F)	Fail-Safe (min)	Termination Temp (°F)	Fail-Safe (min)	Termination Temp (°F)
6	--- ⁶	---	30	42	---	---

1 For meat application: extended front sills are required for maintaining proper case temperature levels (5" baseframe = 24" or higher; 11" baseframe = 30" or higher)

2 BTUH/ft notes:

- Listed BTUH/ft indicate unlighted shelves. For LED lighting, add 36 BTUH per 4' lighted shelf and 27 BTUH per 3' lighted shelf to determine Total Lighting BTUH Load, then divide the Total Lighting BTUH Load by the length of the case. For T8 lighted shelves and 3rd row lighting, add 92 BTUH per 4' lighted shelf and 69 BTUH per 3' lighted shelf to determine Total Lighting BTUH Load, then divide the Total Lighting BTUH Load by the length of the case.
- Add 132 BTUH/ft when aftermarket merchandising accessories are utilized to determine the total BTUH load.

3 Listed evaporator temperature indicates unlighted shelves. For lighted shelves and/or aftermarket merchandising accessories, reduce the listed evaporator temperature by 2°F.

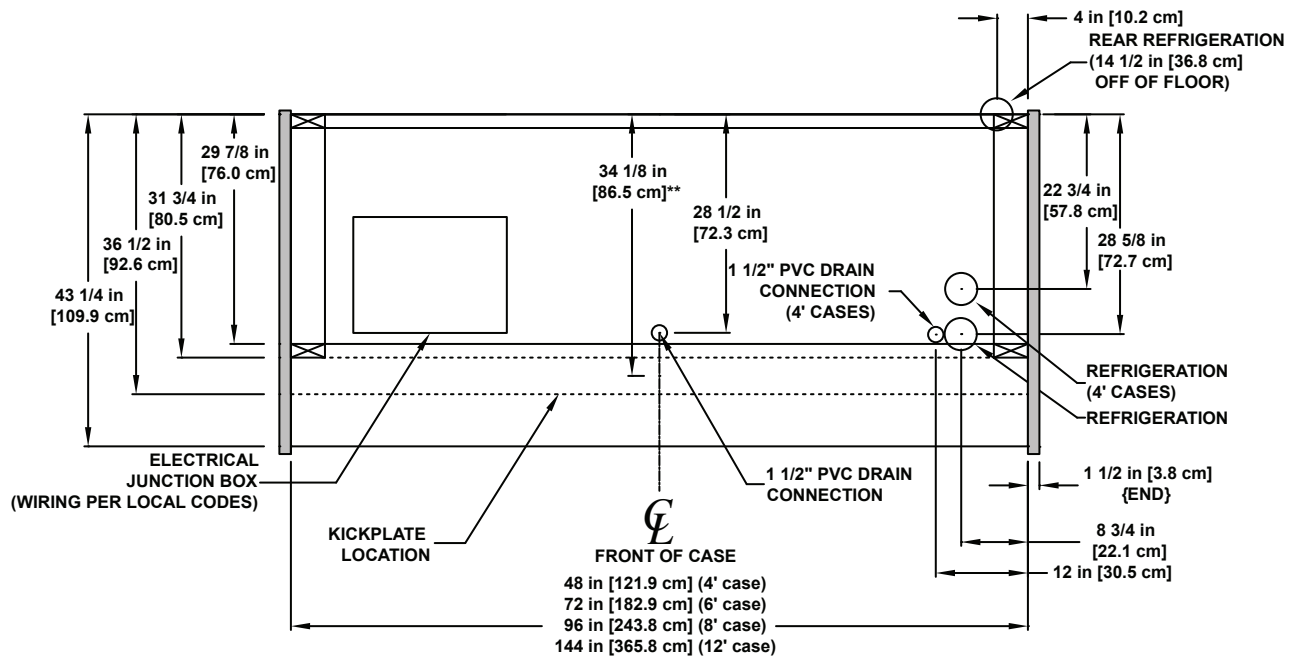
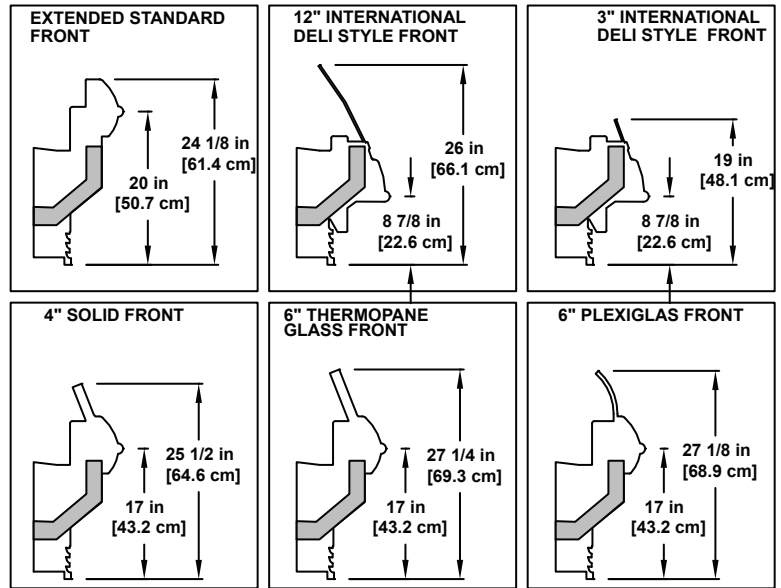
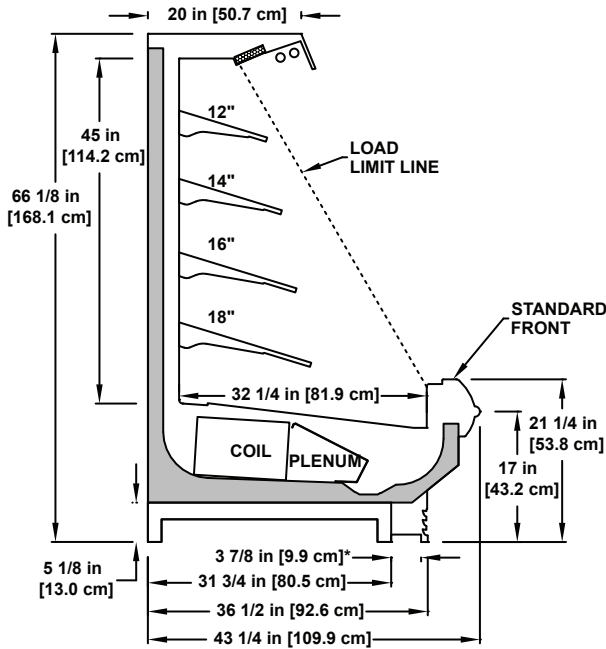
4 Conventional Discharge Air Control – Recommended Settings: Cut-In Temp = Discharge Air + 2°F; Cut-Out Temp = Discharge Air - 2°F

5 Average discharge air velocity at peak of defrost.

6 NOTE: " - - " indicates that feature is not an option on this case model.

5" BASEFRAME
(Baseframe heights vary per customer specification.)

5" BASEFRAME



NOTES:

* :STUB-UP AREA

** :RECOMMENDED STUB-UP CENTERLINE FOR ELECTRICAL AND HUB DRAINS

- FRONT AND REAR SILL HEIGHTS VARY WITH BASE FRAME HEIGHT
- ENDS ADD APPROXIMATELY 1 INCH TO CASE HEIGHT, 1 INCH TO THE FRONT AND 1/2 INCH TO THE BACK
- A 2" MINIMUM AIR GAP IS REQUIRED BETWEEN THE REAR OF THE CASE AND A WALL
- SUCTION LINE (4' & 6') 5/8", LIQUID LINE (8' & 12') 7/8", LIQUID LINE (ALL LENGTHS) 3/8"
- AVAILABLE SHELF SIZES: 10", 12", 14", 16", & 18"
- PRODUCT ON TOP SHELF SHOULD BE 3 INCHES BELOW DISCHARGE
- RECOMMENDED SHELF CONFIGURATION IN ROWS : 1-12", 1-14", 1-16" & 1-18"

O6UM-NRG

Electrical Data

Case Length	Fans Per Case	High Efficiency Fans	
		120 Volts	
		Amps	Watts
4'	1	0.20	14
6'	2	0.40	28
8'	2	0.40	28
12'	3	0.60	42

Lighting Data

Case Length	Lights Per Row	Light Length	Clearvoyant LED Lighting (Per Light Row)			
			Standard Power (Cornice or Shelf)		High Power (Cornice)	
			120 Volts		120 Volts	
			Amps	Watts	Amps	Watts
4'	1	4'	0.10	11.9	0.18	21.5
6'	2	3'	0.14	16.6	0.25	29.8
8'	2	4'	0.20	23.8	0.36	43.0
12'	3	4'	0.30	35.7	0.54	64.5

Guidelines & Control Settings

Model	Front Sill Height	² BTUH/ft		Superheat Set Point @ Bulb (°F)	Evaporator ³ (°F)	Discharge ⁴ Air (°F)	Discharge Air ⁵ Velocity (FPM)
		Conventional	Parallel				
Dairy / Deli / Produce	All	1223	1070	6 - 8	28	31	180
Meat	Ext. ¹	1216	1064	6 - 8	26	30	180

Defrost Controls

Defrosts Per Day	Electric Defrost		Timed-Off Defrost		Hot Gas Defrost	
	Fail-Safe (min)	Termination Temp (°F)	Fail-Safe (min)	Termination Temp (°F)	Fail-Safe (min)	Termination Temp (°F)
6	--- ⁶	---	30	42	---	---

1 For meat application: extended front sills are required for maintaining proper case temperature levels (5" baseframe = 24" or higher; 11" baseframe = 30" or higher)

2 BTUH/ft notes:

- Listed BTUH/ft indicate unlighted shelves. For LED lighting, add 36 BTUH per 4' lighted shelf and 27 BTUH per 3' lighted shelf to determine Total Lighting BTUH Load, then divide the Total Lighting BTUH Load by the length of the case. For T8 lighted shelves and 3rd row lighting, add 92 BTUH per 4' lighted shelf and 69 BTUH per 3' lighted shelf to determine Total Lighting BTUH Load, then divide the Total Lighting BTUH Load by the length of the case.
- Add 132 BTUH/ft when aftermarket merchandising accessories are utilized to determine the total BTUH load.

3 Listed evaporator temperature indicates unlighted shelves. For lighted shelves and/or aftermarket merchandising accessories, reduce the listed evaporator temperature by 2°F.

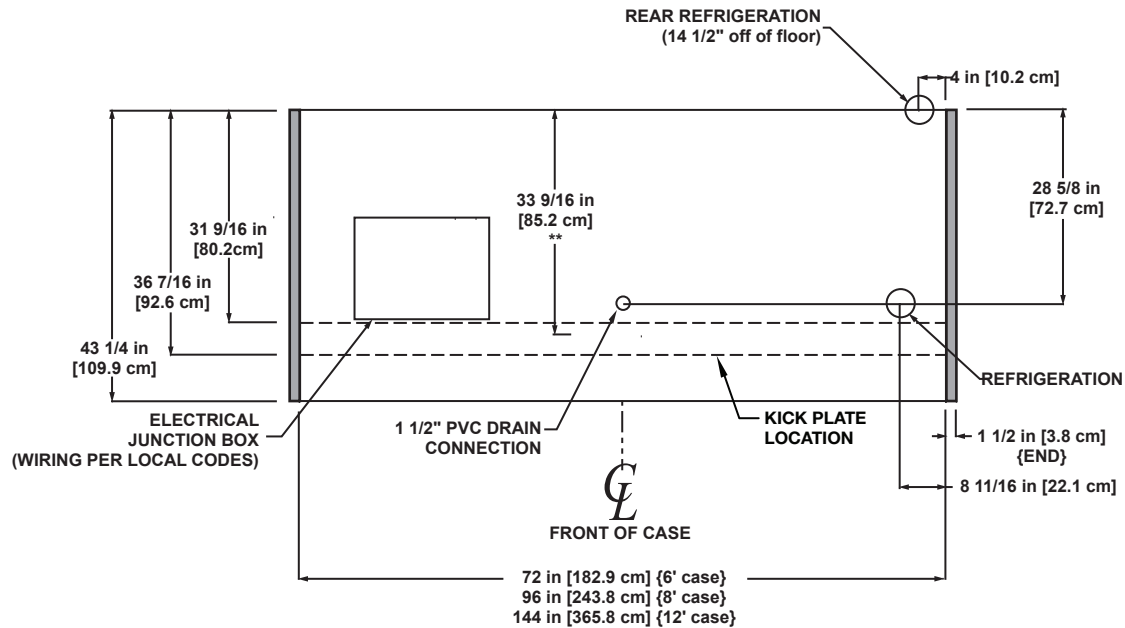
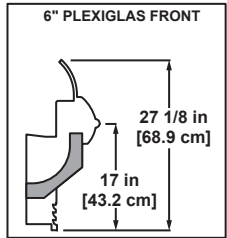
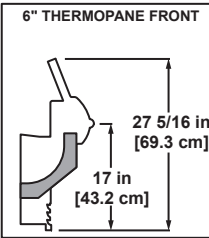
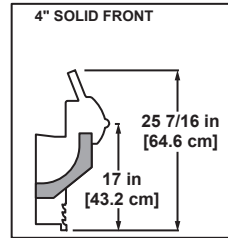
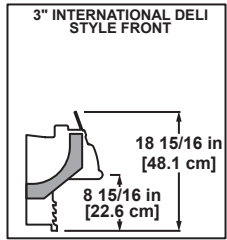
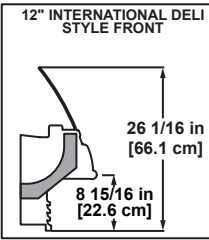
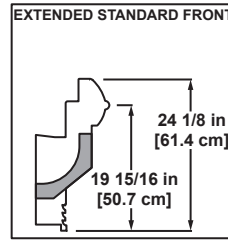
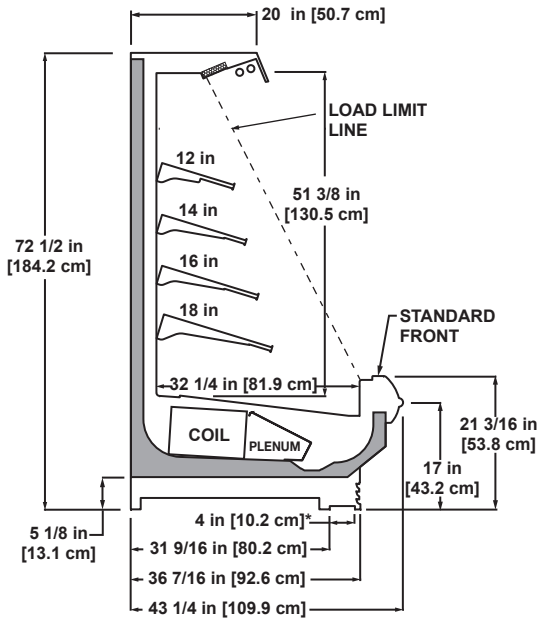
4 Conventional Discharge Air Control – Recommended Settings: Cut-In Temp = Discharge Air + 2°F; Cut-Out Temp = Discharge Air - 2°F

5 Average discharge air velocity at peak of defrost.

6 NOTE: " - - - " indicates that feature is not an option on this case model.

5" BASEFRAME

(Baseframe heights vary per customer specification.)



NOTES:

* STUB-UP AREA

** RECOMMENDED STUB-UP CENTERLINE FOR ELECTRICAL AND HUB DRAINS

- FRONT AND REAR SILL HEIGHTS VARY WITH BASEFRAME HEIGHT
- ENDS ADD APPROXIMATELY 1 INCH TO CASE HEIGHT
- A 2" MINIMUM AIR GAP IS REQUIRED BETWEEN THE REAR OF THE CASE AND A WALL
- SUCTION LINE (6') - 5/8", SUCTION LINE (8' & 12') - 7/8", LIQUID LINE (ALL LENGTHS) - 3/8"
- AVAILABLE SHELF SIZES: 10", 12", 14", 16" & 18"
- PRODUCT ON TOP SHELF SHOULD BE 3" BELOW DISCHARGE
- RECOMMENDED SHELF CONFIGURATION IN ROWS: 1-12", 1-14", 1-16" & 1-18"
- DASHED LINES SIGNIFY AREA INSIDE BASE RAIL BEHIND KICK-PLATE

Thank you for choosing Hillphoenix display cases for your food merchandising needs. This handbook contains important technical information and will assist you with the installation and operation of your new display cases. By closely following the instructions, you can expect attractive fit and finish, peak performance, and long case life.

We are always interested in your suggestions for improvements to Hillphoenix products and accessories—case design, technical documents, etc. Please feel free to contact our Marketing Services group at the toll-free number listed below. Thank you for choosing Hillphoenix, and we wish you the very best in outstanding food merchandising.

CASE DESCRIPTION

O4UM-NRG, O5UM-NRG and O6UM-NRG utility merchandisers.

ELECTRICAL DATA & DIMENSIONAL DRAWINGS

Electrical data and dimensional drawings for the cases listed in this manual can be found on pages 2–7.

STORE CONDITIONS

Hillphoenix cases are designed to operate in an air-conditioned store that maintains a 75°F (24°C) store temperature and 55% (max) relative humidity (CRMA conditions). Case operation will be adversely affected by exposure to excessively high ambient temperatures and/or humidity.

REFRIGERATION SYSTEM OPERATION

Air-cooled condensing units require adequate ventilation for efficient performance. Machine-room temperatures must be maintained at a minimum of 65°F in winter and a maximum of 95°F in summer. Minimum condensing temperatures should be no less than 70°F.

RECEIVING CASES

Examine fixtures carefully and in the event of shipping damage and/or shortages, please contact the Service Parts Department at 1-800-283-1109.

CASE DAMAGE

Claims for obvious damage must be 1) noted on either the freight bill or the express receipt and 2) signed by the carrier's agent; otherwise, the carrier may refuse the claim. If damage becomes apparent after the equipment is unpacked, retain all packing materials and submit a written request to the carrier for inspection within 14 days of receipt of the equipment.

LOST/MISSING ITEMS

Hillphoenix equipment is carefully inspected before shipping to insure the highest level of quality. Any claim for lost/missing items must be made to Hillphoenix within 48 hours of receipt of the equipment.

SERVICE/TECHNICAL SUPPORT

For service or technical questions, please contact our Case Division Customer Service Department at 1-800-283-1109. For questions regarding our refrigeration systems or electrical distribution centers, please contact our Systems Division Customer Service Department at 1-770-388-0706.

PARTS ORDERING

If you need to contact Hillphoenix regarding specific fixtures or parts, please call 1-800-283-1109 and ask for a Service Parts Representative. Provide the following information about the part you are ordering:

- Model number and serial number* of the case for which the part is intended.
- Length of the part (if applicable).
- Color of part (if painted) or color of polymer part.
- Whether part is for left- or right-hand application.
- Quantity

**Serial plate is located inside the case on the bottom-right side.*

If the parts are to be returned for credit, ask the Parts Department to furnish you with a Return Material Authorization Number.

*See **Appendix A** for a detailed parts list and illustration.*

Hillphoenix
1925 Ruffin Mill Rd.
Colonial Heights, VA 23834
Mon.-Fri. (8 a.m to 5 p.m EST)
Tel: 1-800-283-1109
Fax: 804-526-7450
Web site: www.hillphoenix.com

FLOOR PREP

1. Ask the general contractor if your current copy of the building dimensions are the most recently issued. Also, ask for the points of reference from which you should take dimensions to locate the cases.
2. Using chalk lines or a laser transit, mark the floor where the cases are to be located for the entire lineup. The lines should coincide with the outside edges of the case feet.
3. Leveling is necessary to ensure proper case alignment and to avoid potential case damage. Locate the highest point on the positioning lines as a reference for determining the proper height of the shim-pack levels. A laser transit is recommended for precision and requires just one person.
4. Locate basehorse positions along the chalk line. Spot properly leveled shim packs at each basehorse location.

LINE-UP & INSTALLATION

Single Case

1. Roll the case into position, leaving a minimum of 2" between the wall and back of case. Using a "J" bar, raise the end of the case (under cross support), remove the caster assembly (Fig. 1) and lower the basehorse on to the shim packs. Repeat on the other end of the case.

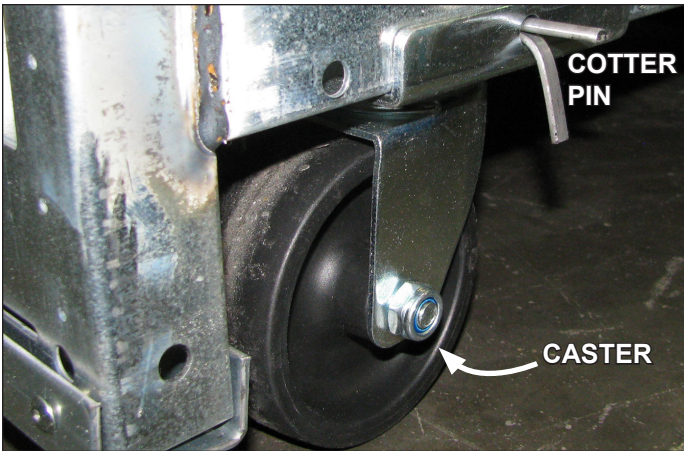


Fig. 1 Removing the casters is an easy process. Simply flatten and remove the cotter pins that are holding the casters in place. Then lift the case with a "J" bar and slide the caster assemblies out. The dismantled casters can now be discarded.



CAUTION!

Be certain that your hands and feet are out of the way before lowering the case after the removal of the casters. Failure to do so may result in serious injury.

2. Once the basehorse is properly placed on the shim packs, check the vertical plumb of the case by placing a bubble level on the rear wall. Add/remove shim packs as needed. For the horizontal level, repeat this process after placing the bubble level on the front sill.

Multi-Case

1. Remove any shelves (discard the shelf clips) and/or loose items (e.g. shipping braces, mirror assemblies, etc) from the cases that may interfere with case joining. **Keep all loose items as they will be used later in the installation process.**
2. Remove the return air grill at the case joint. The grill lifts out without fasteners and may be easily removed to gain clear access to the case-to-case joining bolts.
3. Follow the single-case installation instructions for the first case, then position the next case in the line-up approximately 3' away. Remove the casters on the end that is closest to the first case.
4. Apply the foam tape gasket (supplied) and a bead of butyl or silicone sealant to the end of the first case (Fig. 2). From the opposite end, push the second case to a position that is approximately 6" from the first case, then remove the remaining casters and position case on the shim packs.

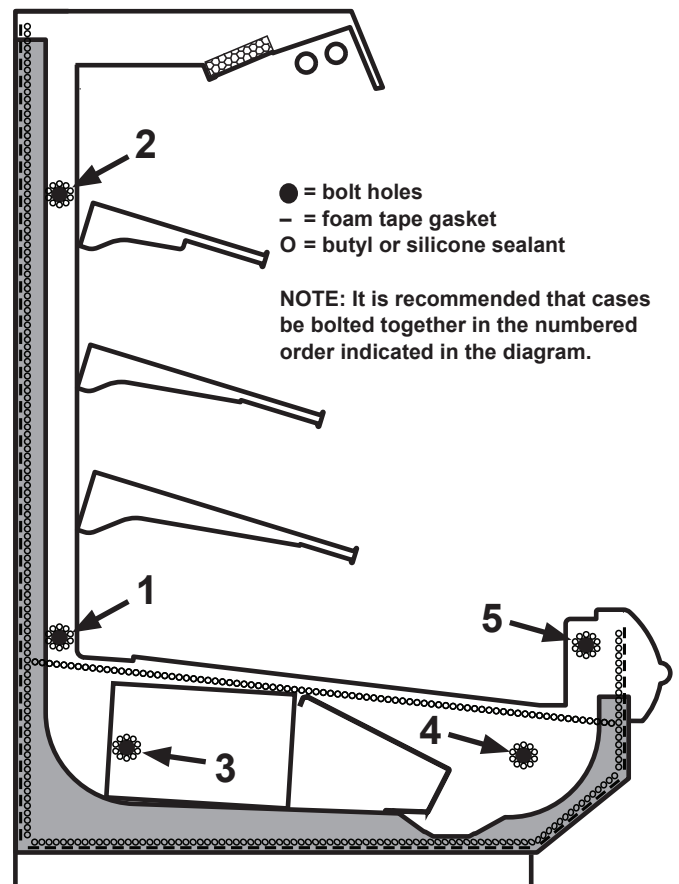


Fig. 2 Bolt holes, foam tape gasket and sealant

5. Loosen the cornice joint at case end (cornice screws are located on top of the case). Be certain that cornice joints and pins are properly aligned. Cases are now ready to be joined.
6. Push the cases tightly together, then lightly bolt them together through the holes that are provided (Fig. 2). Tighten all the joining bolts until all margins are equal. Be careful not to over tighten.
7. Repeat steps 3-6 of this sequence for all remaining cases. Be certain to properly level all cases.
8. *If seismic brackets are included, see Appendix D for detailed installation instructions.*

TRIM OUT

1. To align the master bumpers, slide master bumper joint trim in between adjoining master bumpers. (Fig. 3).
2. Slide the master bumpers left or right to close the seams as required, working outwards from the center of the line-up to the ends.

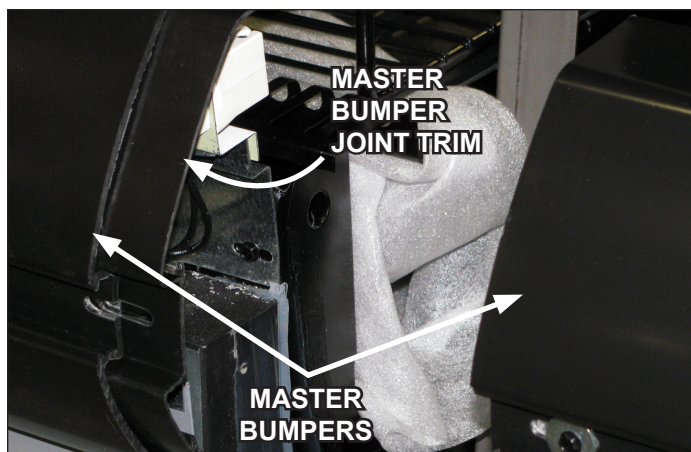


Fig. 3 Master bumpers and joint trim

3. Close the seam where the bumper joins the case end. The bumper joint closes the seam that may develop if the master bumper is moved away from the end to close the case-to-case joint seam.
4. Seal the interior case-to-case joints with caulk (supplied), then apply acrylic tape (supplied) over the pipe-chase seam (Fig. 4). The tape acts as a watershed preventing water from settling in the case joint.
5. Install the mirror assembly and mirror scoop (if ordered). *For installation instructions, see Appendix E.*
6. Re-install shelves (or peg hook assemblies if applicable). Be aware that differing shelf configurations will affect energy consumption and case performance. *If shelf fillers are to be installed, see Appendix F. If peg hook assemblies are to be installed, see Appendix I.*
7. Tighten all cornice joints as needed (Fig. 5). Working outward from the center of the line-up, loosen the fas-

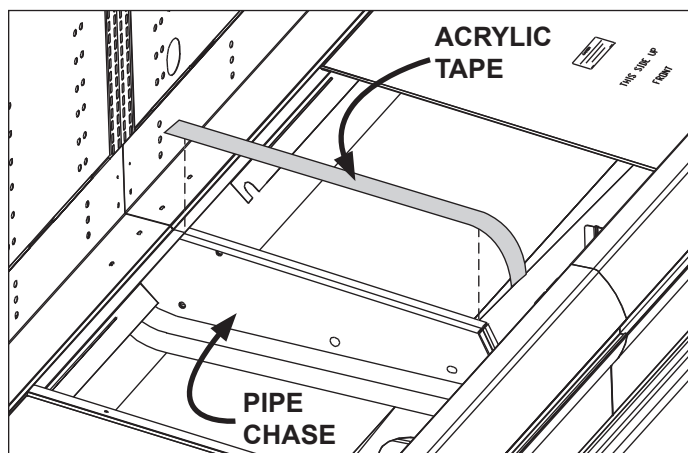


Fig. 4 Sealing the pipe chase

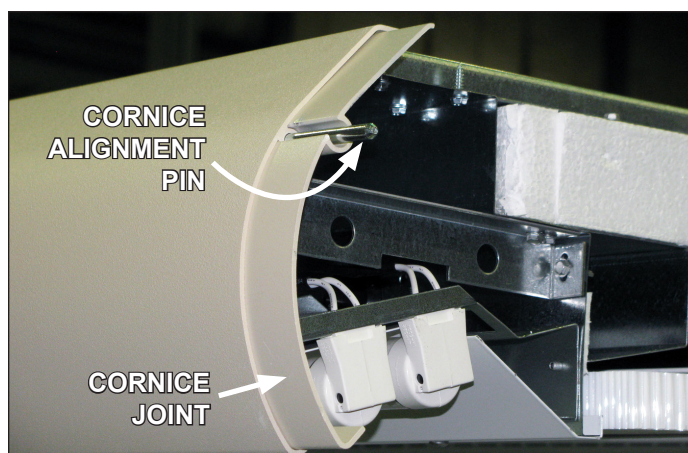


Fig. 5 Cornice joints

teners on the top and slide the cornices in one direction so that each joint aligns tightly together. Tighten the fasteners on top and apply an external joint band on the extreme ends of the lineup if a gap exists.

8. Properly align the front panels as needed, then install the front panel trim (supplied).

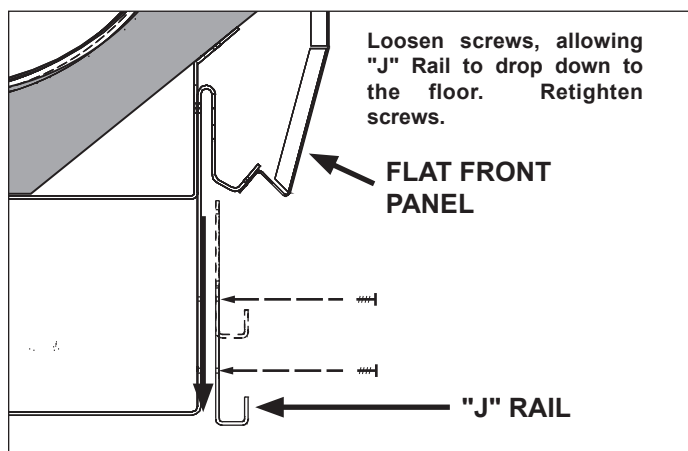


Fig. 6 "J" rail installation

9. The "J" rail (Fig. 6) is shipped attached to the case as shown. Loosen screws holding "J" rail to allow it to slide down and fit flush with the floor. Re-tighten screws.
10. If cases are equipped with contour front panels, the upper kickplate retainer is shipped loose in the case. When installing the upper kickplate retainer, be sure it is positioned behind the lip on the front panel.
11. Insert top of kickplate into the kickplate retainer. Slide the kickplate up into the retainer, then down onto the "J" rail (Fig. 7). Be certain that the bottom of the kickplate is fitted over extruding "lip" of the "J" rail.

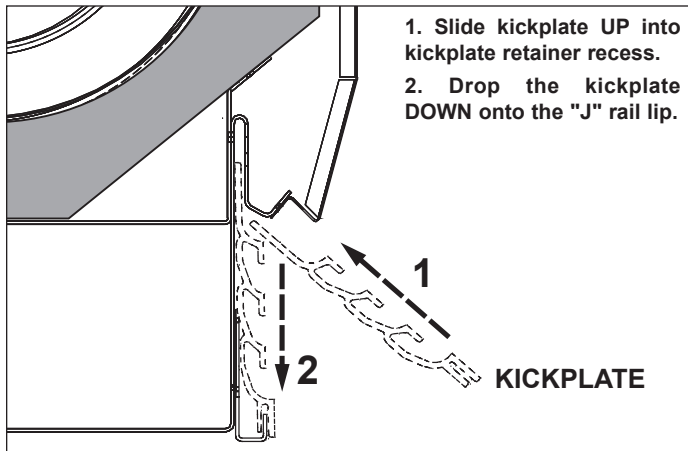


Fig. 7 Kickplate installation

12. Install accent bumper into pre-attached bumper track and snap into place.
13. Insert nose bumper into master bumper channel (Fig. 8). Roll nose bumper into channel along entire lineup, up to 96'. We recommend leaving an additional 6" of nose bumper at the ends to allow for shrinkage during the first 24-48 hours following case start-up.
14. After sufficient time has passed to allow for bumper shrinkage, cut away the excess bumper for final fit and finish. Be certain to use an appropriate cutting tool (tubing- or PVC-cutter) to ensure a smooth cut.
15. If case top fascia is included, see **Appendix G** for installation instructions.
16. If electric display modules are included, see **Appendix H** for installation instructions.



ATTENTION!

Installation of 3rd-party materials may result in diminished case performance.

FRONT ASSEMBLY

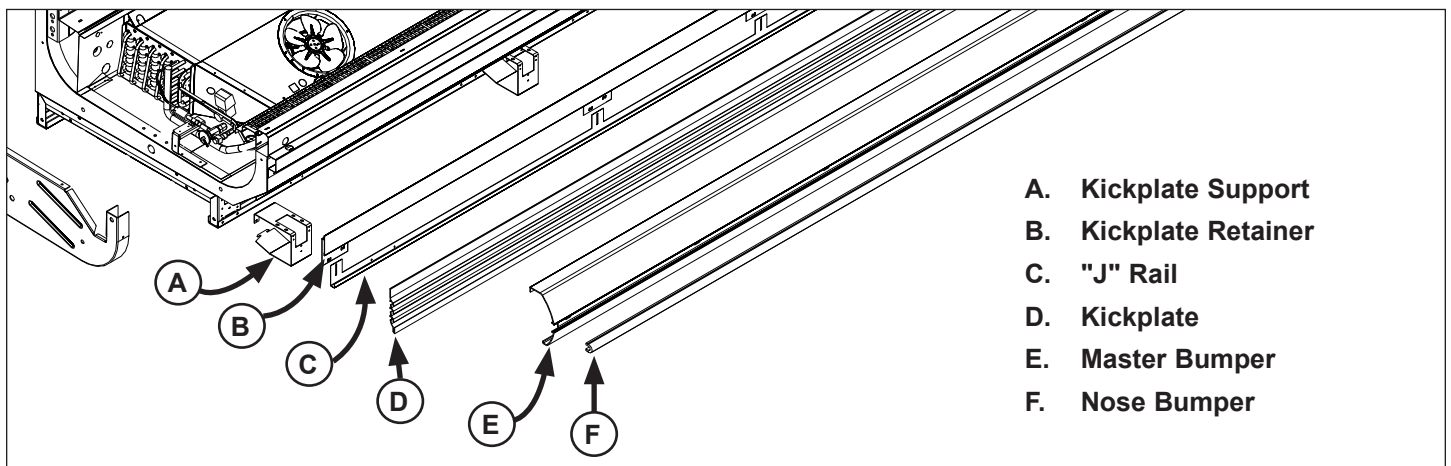


Fig. 8 Front assembly

**ATTENTION!**

Connections are illustrated in dimensional drawings found on **pages 2–7**.

REFRIGERATION

There are three refrigeration piping options for this case family: standard, rear, and top.

Standard piping penetration is located at the front-right area of the case, fully visible in front of the fan plenum. Rear piping penetration is located at the rear-right area, consisting of a pre-cut access punch-out, exposing the foam material that must be penetrated prior to pipe joining (Fig. 9). The rear-box top option consists of piping enclosed in a foam box that exits at the back-right of the case, near the top.

If hot gas defrost is utilized, suction lines to each case in the circuit should be of equal distance from the main suction line. The expansion valve and other controls - located on the left-hand side of the case - are accessible by lifting the two left-hand deck pans (lifting the fan plenum is not required).

Before operating the case, be certain to remove the shipping blocks (Fig. 10) that protect the refrigeration lines during shipping. If it becomes necessary to penetrate the case tank in any area, be certain to seal any open gaps afterwards with canned-foam sealant and white RTV.

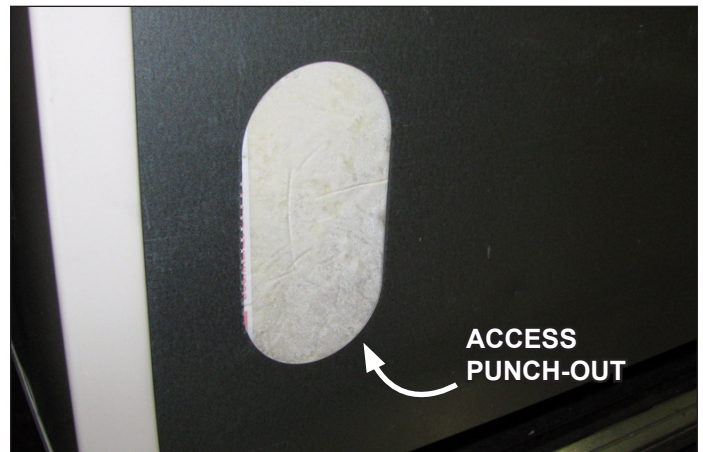


Fig. 9 Penetrate foam as needed to access piping

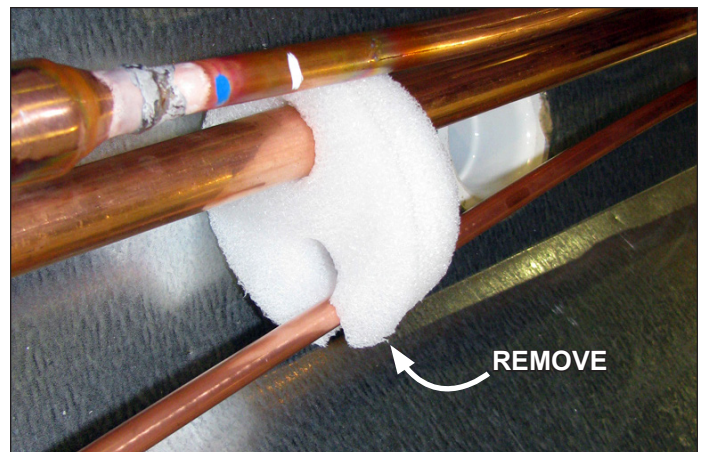
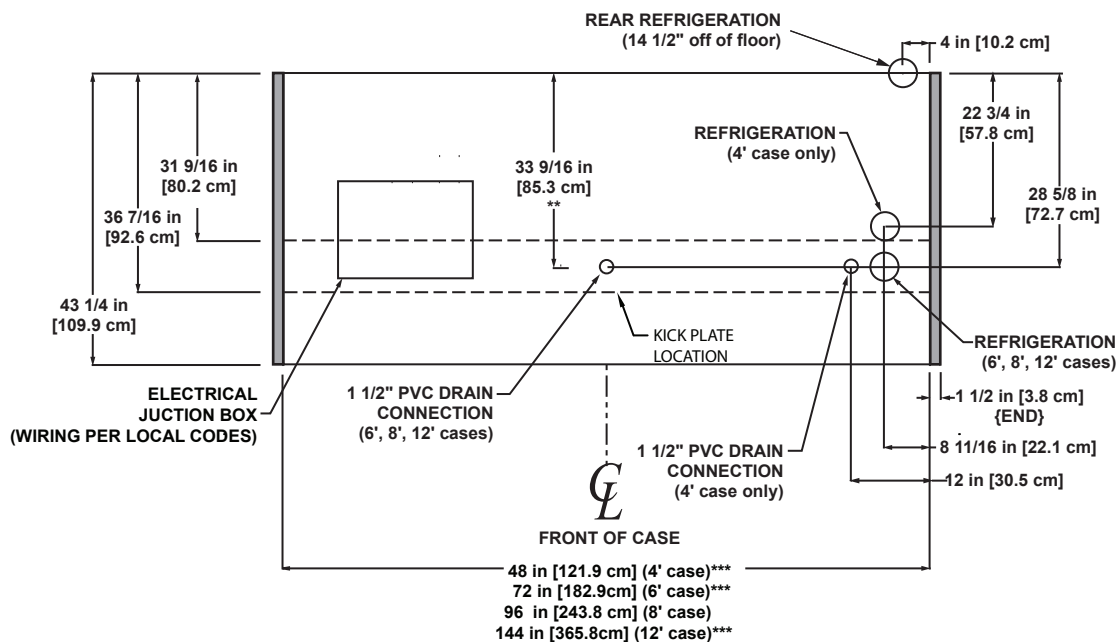


Fig. 10 Remove the shipping blocks

O4UM-NRG

(Floor plan for O4UM-NRG shown. For other case models, see pages 5 and 7.)



PLUMBING

The drain outlet is specially molded out of PVC material and is located in the front-center of the case for convenient access. The "P" trap, furnished with the case, is constructed of schedule 40 PVC pipe (Fig. 11). Care should be given to ensure that all connections are water-tight and sealed with the appropriate PVC or ABS cement.



Fig. 11 "P" trap

The drain lines can be run left or right of the tee with the proper pitch to satisfy local drainage requirements. Since the kickplate is shipped loose with the case, you should have open access to the drain line area during installation.

If the kickplate has been installed, you will find it very easy to remove. Simply lift the kickplate up from the "J" rail and pull it out, away from the case (see **Trim Out** section).

ELECTRICAL

Electrical hookups are made to a junction box located either at the bottom-front-left of the case (Fig. 12), at the top-rear-left of the case or to the raceway running along the bottom-front of the case.



Fig. 12 Junction box beneath case

For case-to-case wiring, run conduit between the junction boxes or run wiring through the raceway (Fig. 13). When connecting to the junction box on the bottom-left side of the case, field wiring should exit box from the right side (furthest away from case wiring) to allow more room inside for wiring connections. *For more detailed electrical wiring information, see **Appendix B**.*



Fig. 13 Raceway wiring



ATTENTION!

Be certain to clear the case of any loose packaging or case materials before energizing the case. Failure to do so may result in case damage or malfunction.



ATTENTION!

If brazing is necessary, place wet rags around the area to avoid tank damage.



ATTENTION!

Be certain that all piping and electrical connections comply with local codes.

Before powering-up the case, be certain that all of the steps listed below have been completed to ensure proper case functionality, safety and compliance with warranty terms.

- ☐ **Have you thoroughly examined the case for shipping damage? (see pg. 8)**
- ☐ **Have you removed and discarded the casters? (see pg. 9)**
- ☐ **Have you checked the vertical plumb of the case? The horizontal level? (see pg. 9)**
- ☐ **Have you applied the foam tape gasket and sealant between adjoining cases? (see pg. 9)**
- ☐ **Have you sealed the case-to-case joints by applying caulk and acrylic tape to the pipe-chase seam? (see pg. 10)**
- ☐ **Have you removed the shipping blocks from the refrigeration lines? (see pg. 12)**
- ☐ **Have you sealed any tank penetrations? (see pg. 12)**
- ☐ **Have you cleared the case of any loose packaging or case materials? (see pg. 13)**

AIR FLOW & PRODUCT LOAD

It is important that you do not overload the food product display so that it impinges on the air flow pattern - overloading will cause malfunction and the loss of proper temperature levels, particularly when discharge and return air sections are covered. Please keep products within the load limit line shown on the diagram below (Fig. 14).

DEFROST & TEMPERATURE CONTROLS

Hill PHOENIX cases utilize electric, hot gas, or timed-off defrost. The primary components used for the defrost cycle are the various defrost termination sensors, which work to terminate the defrost cycle in the case. These controls may include 1) a Klaxon® thermostat, 2) a sensor probe, or 3) a dial-type thermostat with sensor bulb (the thermostat will always be mounted with the electrical controls of the case - i.e., in the electrical junction box, in the electrical raceway, etc.).

If electric defrost is used, the defrost termination sensor will be located either behind the rear baffle or mounted to the coil. If hot gas defrost is used, the defrost termination sensor will be mounted to the dump line - the sensor should always be mounted on the coil-side of the check valve or solenoid valve. Finally, if timed-off defrost is used, the refrigeration cycle is simply turned off by the case controls for a specified amount of time; therefore, there are generally no active defrost components utilized.

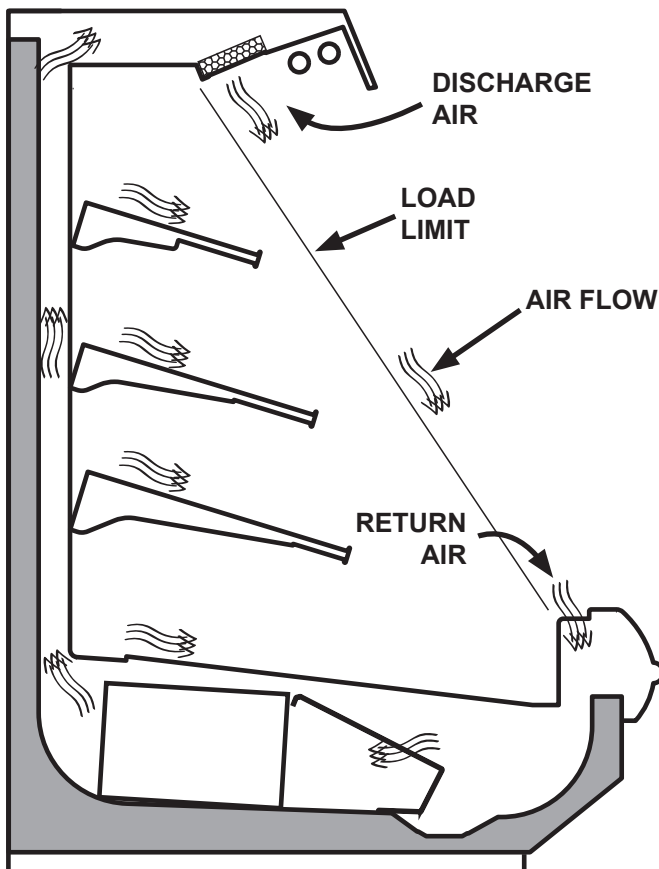


Fig. 14 Airflow

The discharge air probe monitors the temperature of the discharge air and may be used as the defrost termination sensor. The probe can generally be found behind the rear baffle, in the upper baffle, or in front of the honeycomb.

NOTE: if the discharge air probe is used for defrost termination, none of the termination sensors listed earlier will be installed in the case.

For more detailed information on suggested defrost times and settings, see pages 2–5. Further adjustment may be required depending on store conditions.

DETERMINING SUPERHEAT

To identify the correct superheat settings, complete the following steps:

1. Obtain the suction pressure from the access port and obtain the suction line temperature from the area near the TXV bulb at the outlet of the evaporator coil (Fig. 15).
2. Using the suction pressure reading and the Sporlan® temperature-pressure chart (**Appendix C**) convert pressure-to-temperature.
3. Finally, subtract the converted temperature reading from the actual temperature reading. The resulting number is the correct superheat setting.

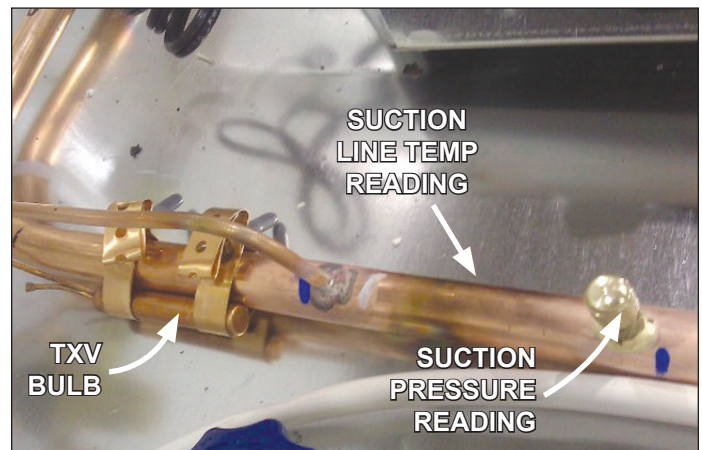


Fig. 15 Obtain pressure and temperature readings

**DANGER!****SHOCK HAZARD**

Always disconnect power to case when servicing or cleaning. Failure to do so may result in serious injury or death.

Hillphoenix cases may be equipped with either T-8 lights or LED luminaires. Depending on case configuration, T-8 electronic ballasts or LED power supplies operate both the canopy lights and shelf lights and are located in the cornice area, above the light reflectors.

**CAUTION!**

Never replace a 24V DC power supply with a T-8 or T-5 ballast, since ballasts use alternating current (AC) and operate at a much higher voltage than is used by this LED system. Doing so will damage the LED system and increases the chance of safety issues/injury.

Both lighting systems have an ON/OFF switch that is located in the upper left-hand corner of the lighting assembly. Once cases have been properly positioned in the store and an electrician has connected the lighting circuit, the lights may be turned on to verify that they are connected and functioning properly.

To ensure peak performance, it is advisable to run the lighting systems only when the store climate control is on and case refrigeration is started. **NOTE: it is highly recommended that the ambient store temperature not exceed 80°F.**

REPLACING T-8 LIGHTS

1. Simultaneously pull down at both ends of the old T-8 light to remove from the lamp holder (Fig. 16). Remove the lamp caps and plastic shield from the old light, then discard the light.

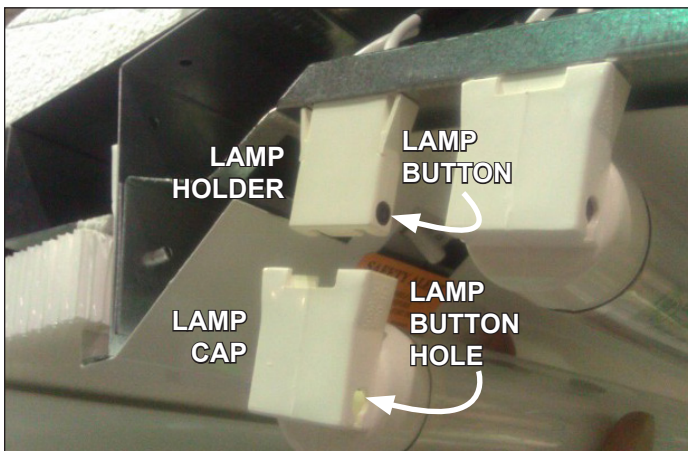


Fig. 16 Remove old T-8.

2. Attach the lamp caps and plastic shield to the new T-8 lamp.
3. Push the new T-8 lamp into place on the lamp holder. When the T-8 is properly seated, the lamp button - which secures the T-8 to the lamp holder - will be clearly visible through the lamp button hole (Fig. 17).

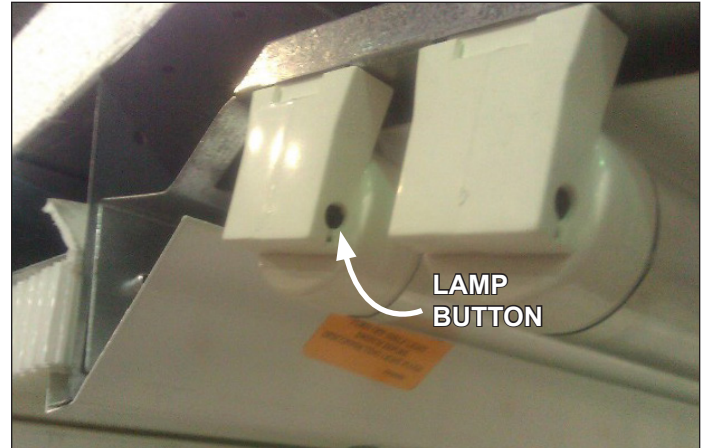


Fig. 17 Secure new T-8 on lamp holder by aligning with plug button.

REPLACING SHELF LED LUMINAIRES

1. Unplug the LED luminaire (Fig. 18).
2. Pinching the latching clips inward at the ends of the luminaire, rotate luminaire down at each end until hooks are free, then remove (Fig. 19).
3. To install the new luminaire, place hook into shelf roll at shelf front and rotate rear of luminaire toward the shelf.
4. Depress the rear clip so that luminaire can finish rotation and until clip engages the shelf bracket.



Fig. 18 Unplug the LED luminaire.



Fig. 19 Remove the old LED luminaire.

REPLACING NON-SHELF LED LUMINAIRES

1. Squeeze plastic clips on the 4-pin connector at the end of the luminaire, then pull free of the receptacle (Fig. 20).
2. At the other end, slide the luminaire to the opening and disengage from the metal housing slot (Fig. 21).
3. To install the new luminaire, simply reverse the previous steps.



Fig. 20 Squeeze the latching clips and pull the luminaire free.



Fig. 21 Slide the other end to the opening in the sheet metal and disengage.

BALLAST/POWER SUPPLY ACCESS

To gain access to the ballasts or power supplies, the reflectors may be removed easily by following these instructions:

1. Remove T-8 lamps or LED luminaires.
2. Remove screws along length of the reflector and carefully remove the reflector.
3. Ballasts/power supplies are now visible (Fig. 22).
4. To replace reflector, reverse the procedure. Insert reflector in front channel, lift into place, then replace the screws in the reflector.

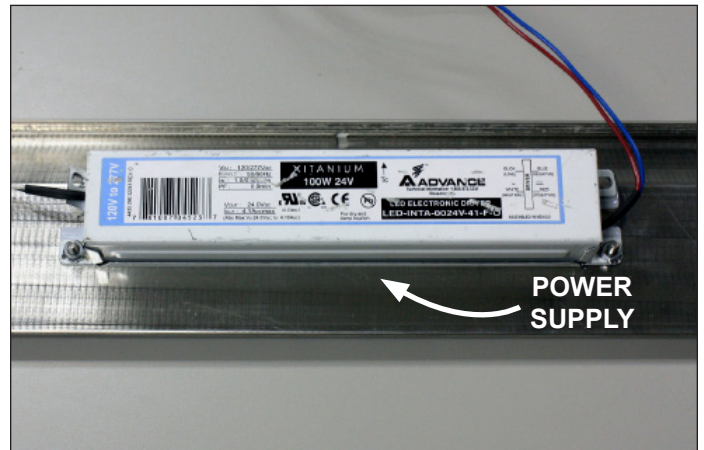


Fig. 22 Clear view of the power supply once the light reflector is removed.



ATTENTION!

If fascia is installed on top of the case, do not drill into the area above the ballast(s). Doing so may result in case damage.



CAUTION!

Using improper DC power supplies may damage the luminaires, resulting in sub-standard operation and increased chances of safety issues/injury.

**DANGER!****SHOCK HAZARD**

Always disconnect power to case when servicing or cleaning. Failure to do so may result in serious injury or death.

FANS

Fan blade pitch is set during manufacturing. It is important that the blade pitch be maintained as specified. **Do not attempt a field modification by altering the blades.**

Fan assemblies may be changed with an easy two-step process without lifting up the plenum, thereby avoiding the necessity to unload the entire product display to change the fan assembly:

1. Unplug the fan motor (Fig. 23), easily accessible outside the plenum. Be certain to push the power cord back through the plenum opening to avoid damage to the power cord.
2. Remove fasteners, then lift out the entire fan basket.

Reverse procedure when re-installing fan basket.

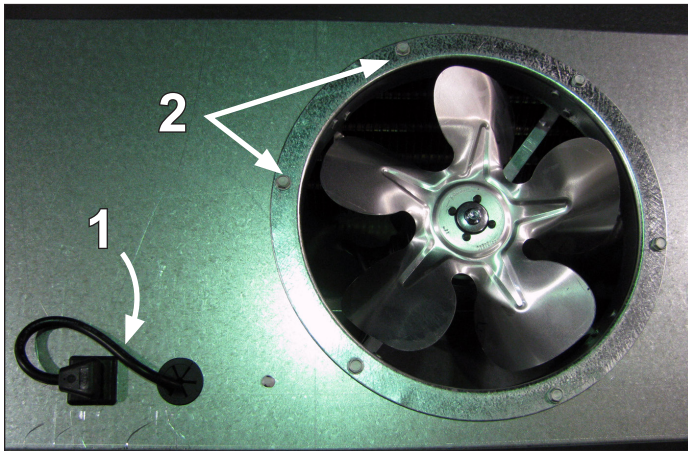


Fig. 23 Fan basket

**ATTENTION!**

Power cord must be pushed back through the plenum opening before removing the fan basket. Failure to do so may result in damage to the power cord.

**CAUTION!**

Exercise extreme caution when working in a case with the coil cover removed. The coil contains many sharp edges that can cause severe cuts to the hands and arms.

CLEANING PROCEDURES

A periodic cleaning schedule should be established to maintain proper sanitation, insure maximum operating efficiency, and avoid the corrosive action of food fluids on metal parts that are left on for long periods of time. We recommend cleaning once a week.

- To avoid shock hazard, be sure all electrical power is turned off before cleaning. In some installations, more than one disconnect switch may have to be turned off to completely de-energize the case.
- All surfaces pitch downward to a deep-drawn drain trough, funneling liquids and other debris to the waste outlet. Check waste outlet before starting the cleaning process to insure it is unclogged. Avoid introducing water faster than the case drain can carry it away.
- Open the fan plenum to gain access to the coil for cleaning and maintenance (Fig. 24).
- To clean the lights, shut off the lights in the case, then wipe them down with a soft, damp cloth. Avoid using harsh or abrasive cleaners as they may damage the lights. Be certain that the lights are completely dry before re-energizing.
- If any potentially harmful cleaners are used, be certain to provide a temporary separator (e.g., cardboard, plastic wrap, etc.) between those cases that are being cleaned and those that may still contain product.
- Avoid spraying cleaning solutions directly on electrical connections.
- Allow cases to be turned off long enough to clean any frost or ice from coil and pans.
- Remove kickplate and clean underneath the case with a broom and a long-handled mop. Use warm water and a disinfecting cleaning solution when cleaning underneath the cases.

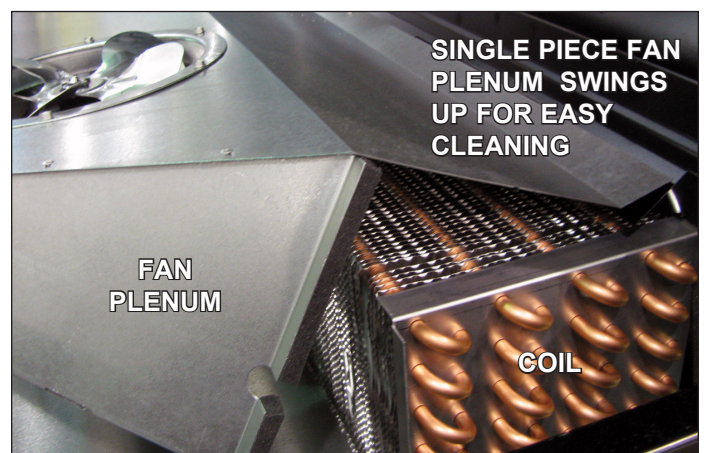


Fig. 24 Single-piece fan plenum and coil cover



A  COMPANY

WARRANTY

HEREINAFTER REFERRED TO AS MANUFACTURER

FOURTEEN MONTH WARRANTY. MANUFACTURER'S PRODUCT IS WARRANTED TO BE FREE FROM DEFECTS IN MATERIAL AND WORKMANSHIP UNDER NORMAL USE AND MAINTENANCE FOR A PERIOD OF FOURTEEN MONTHS FROM THE DATE OF ORIGINAL SHIPMENT. A NEW OR REBUILT PART TO REPLACE ANY DEFECTIVE PART WILL BE PROVIDED WITHOUT CHARGE, PROVIDED THE DEFECTIVE PART IS RETURNED TO MANUFACTURER. THE REPLACEMENT PART ASSUMES THE UNUSED PORTION OF THE WARRANTY.

This warranty does not include labor or other costs incurred for repairing, removing, installing, shipping, servicing, or handling of either defective parts or replacement parts.

The fourteen month warranty shall not apply:

1. To any unit or any part thereof which has been subject to accident, alteration, negligence, misuse or abuse, operation on improper voltage, or which has not been operated in accordance with the manufacturer's recommendation, or if the serial number of the unit has been altered, defaced, or removed.
2. When the unit, or any part thereof, is damaged by fire, flood, or other act of God.
3. Outside the continental United States.
4. To labor cost for replacement of parts, or for freight, shipping expenses, sales tax or upgrading.
5. When the operation is impaired due to improper installation.
6. When installation and startup forms are not properly complete or returned within two weeks after startup.

THIS PLAN DOES NOT COVER CONSEQUENTIAL DAMAGES. Manufacturer shall not be liable under any circumstances for any consequential damages, including loss of profit, additional labor cost, loss of refrigerant or food products, or injury to personnel or property caused by defective material or parts or for any delay in its performance hereunder due to causes beyond its control. The foregoing shall constitute the sole and exclusive remedy of any purchases and the sole and exclusive liability of Manufacturer in connection with this product.

The Warranties are Expressly in Lieu of All Other Warranties, Express or Implied and All Other Obligations or Liabilities on Our Part. The Obligation to Repair or Replace Parts or Components Judged to be Defective in Material or Workmanship States Our Entire Liability Whether Based on Tort, Contract or Warranty. We Neither Assume Nor Authorize Any Other Person to Assume for Us Any Other Liability in Connection with Our Product.

MAIL CLAIM TO:

Hillphoenix
Display Merchandisers
1925 Ruffin Mill Road
Colonial Heights, VA 23834
1-800-283-1109

Hillphoenix
Refrigeration Systems &
Electrical Distribution Products
709 Sigman Road
Conyers, GA 30013
770-285-3200

Warning **Servicing & Case Care**

When servicing or cleaning cases, observe the following procedures to avoid case damage or injury:

Be certain that all electric power is turned off before servicing or cleaning to avoid electrical shock. In some cases, more than one switch may need to be turned off to completely de-energize the case.

Do not spray cleaning solution or water directly on fan motors or any electrical connections.

All lighting components must be dried thoroughly before installation and before re-energizing the lighting circuit.

Please refer to the Case Cleaning section of this installation manual.

Hillphoenix

A **DOVER** COMPANY

Phone: 1-800-283-1109

1925 Ruffin Mill Road, Colonial Heights, VA 23834

Due to our commitment to continuous improvement, all specifications are subject to change without notice.

Hillphoenix is a Sustaining Member of the American Society of Quality.

Visit our web site at www.hillphoenix.com

